



WELCOME

The Metropolitan Planning Organization (MPO) is updating the Long Range Transportation Plan. To keep the community informed on the project, a series of newsletters will be published on the project website – www.bis-manplan2009.com

Contact Information

Ben Ehreth, AICP
Transportation Planner
Bismarck-Mandan MPO
215 North 5th Street
bjehreth@nd.gov

Bill Troe, AICP
URS Corporation, Inc.
402-952-2522
Bill_Troe@urscorp.com

L RTP Update Website
www.bis-manplan2009.com
(Check for Updates)

MPO Participants

Bismarck
Mandan
Lincoln
Burleigh County
Morton County
North Dakota DOT
Bis-Man Transit

THE LONG RANGE TRANSPORTATION PLAN UPDATE - 2009

As an urban area of over 50,000 people, Bismarck, Mandan, Lincoln, Morton County and Burleigh County are required to prepare and/or update a coordinated long range transportation plan. The purpose of the plan is to establish a blueprint of the transportation system projects and programs that address identified transportation needs in the metro area. Development and maintenance of the long range transportation plan (LRTP) is one of the primary responsibilities of the Metropolitan Planning Organization (MPO).

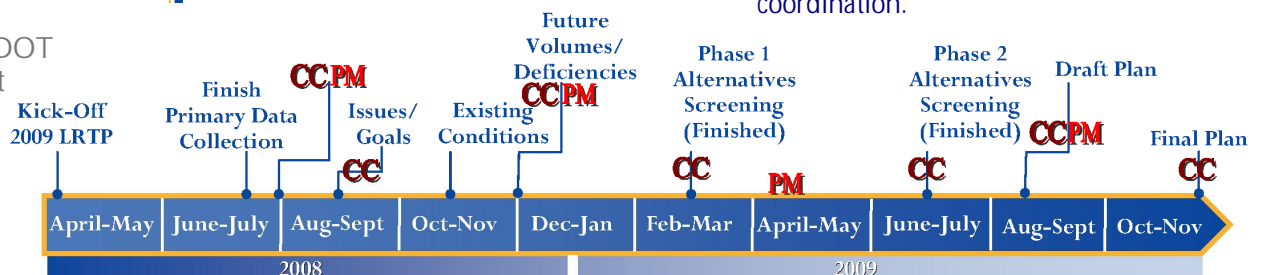
The MPO is organized to include:

- A Policy Board that is responsible for making decisions regarding the various activities carried out by the MPO.
- A Technical Advisory Committee (TAC) that is made up of engineering and/or planning staff from each of the members.
- Transportation Planning Staff.

Traditionally, the public has been involved in the LRTP process through open meetings held at key milestones in the plan development period and through information that is placed on the MPO web page (www.bismarck.org - in the Planning & Development & MPO area). For the 2008-09 update, a group being called the Community Committee (CC) has been organized. The CC is made up of residents, business groups, bike groups, transit users/representatives, and community agency representatives intended to reflect the mixture of interests in the community.

ROLE OF THE COMMUNITY COMMITTEE

The Community Committee will be a soundingboard throughout the plan update to help the technical team create a plan that reflects the community. The LRTP requires coordination of many technical aspects of transportation system planning (what actions would reduce/resolve congestion at a specific location, where are new trails needed, how many more buses are needed to handle transit demand?) with the social impacts/benefits that are associated with the universe of alternatives that will be discussed. The CC will aid in the coordination.



CC - Community Committee Meeting/Workshop
PM - Public Information Meeting

L RTP PROCESS AND MILESTONES

Displayed in the attached flow chart are the general milestone steps in the LRTP update. Key decision points in the process include:

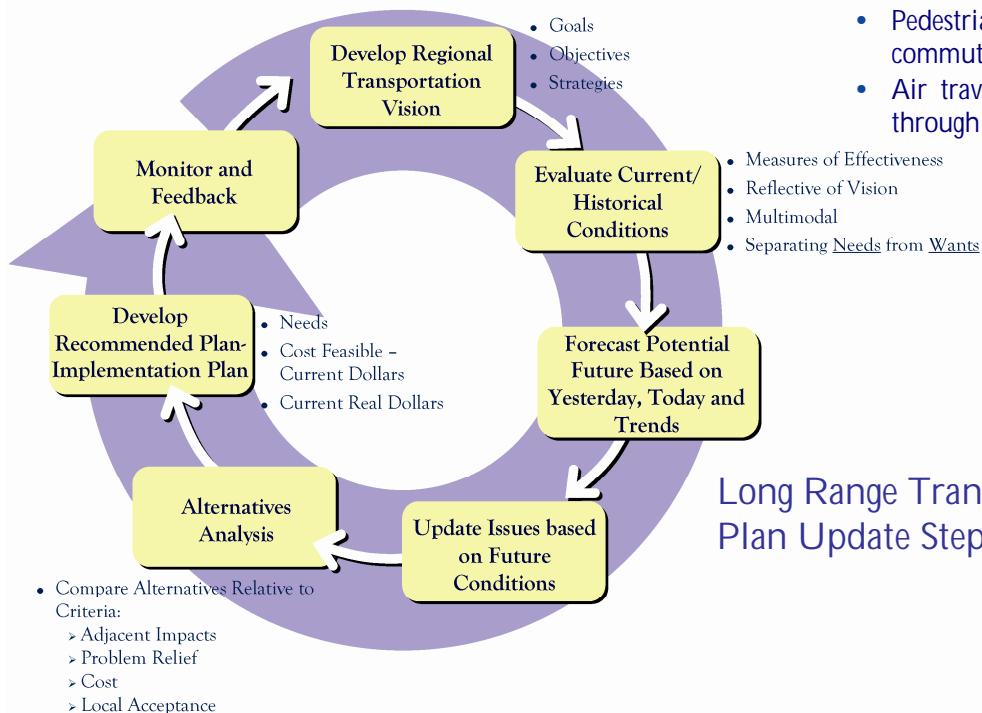
- Identification of local transportation system issues/needs: The MPO has completed a number of subarea and specific corridor studies since the last LRTP update was adopted. In each of these studies there was a step of gathering data on issues/concerns/needs in the area or corridor. Information for this update will include all of the previous work (and not redo it).
- Establish transportation system goals and objectives.
- Future year traffic forecasts. The LRTP horizon must look out a minimum of 20 years into the future. This update will extend the planning horizon from 2030 to 2035.
- Identification and screening of a broad range of multimodal alternatives to reduce/resolve identified issues.

- Preparation of a multimodal system improvement plan that fits within the local transportation budget. A key requirement of the LRTP is that the MPO can show that all of the projects or programs that are included in the recommendations fit within the local transportation budget.

DEFINING MULTIMODAL

One of the most used terms in the LRTP process is going to be "multimodal", but what does that mean? A multimodal plan requires that a range of different forms of transportation be given appropriate consideration (not necessarily equal) relative to the issues/needs/opportunities/potential in the overall transportation improvement system. Modes included are:

- Autos on roadways moving people and goods.
- Trucks on the road moving goods/freight.
- Transit buses moving people.
- Bike travel for both recreation and commuting.
- Pedestrian travel for both recreation and commuting.
- Air travel needs that would be funded through federal transportation dollars.



Long Range Transportation Plan Update Steps